



# LYNX patch cable Cat5E, UTP

PK-UTP5E-xxxx-GREY

## CATEGORY

Cat5E

## SUPPORTED PROTOCOLS:

10BASE-T

100BASE-T

1000BASE-T

2.5GBASE-T

## CONDUCTOR

AWG 24

stranded wire

## INSULATION

PVC

## LENGTH (including connectors)

0,1 m

0,25 m

0,3 m

0,5 m

1 m

1,5 m

2 m

3 m

5 m

7 m

10 m

15 m

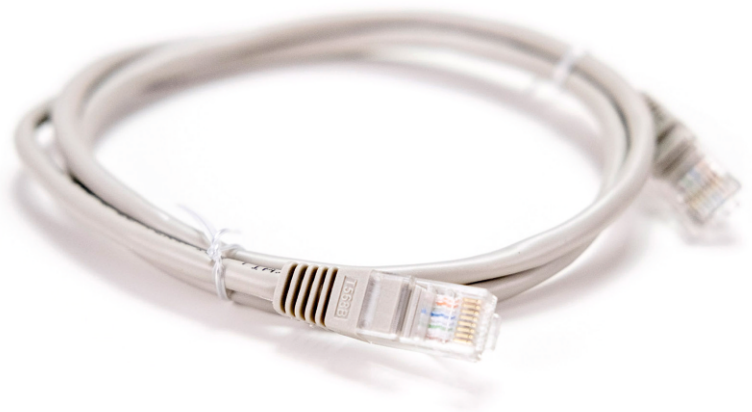
20 m

## IMPEDANCE

100  $\Omega$

## OPERATING TEMPERATURE

-30 °C - +60 °C



## CONNECTORS

RJ-45 (8p8c)

pressed

## SHIELDING

aluminium foil

## COLOUR

grey

## STANDARDS

EN 501731

ISO/IEC 11801

RoHS

